

# Fernie Trails Update for Spring and Summer 2019 – Where to Go & Temporary Closures

As of May 16, 2019

A variety of local trail notices and updates have caused the need to clarify the current situation for this summer season. Trails in Fernie are extensive, cherished and a critical part of what Fernie is well known for. Though 2019 will experience a few interruptions most trails are accessible to mountain bike, walk and hike! Continue below for current details and updates.

## DID YOU KNOW?

Most mountain bike trails are easily accessible from town without the need to drive to the trailhead.

Many of Fernie’s trails are on private land with land use agreements in place that allow locals and visitors to enjoy them. Please respect these permissions and all [trail-use ethics](#).

The best online source of current trail information, updates and mapping is through the [Fernie Trails Alliance website](#) and through [Trailforks](#).

You can also download the [Trailforks App](#) to use it on your mobile device while out on the trails. It will show you where you are on a GPS based map while providing trail updates.

View the general [Fernie Trail Map PDF](#) to understand where the below areas are located.

Stop by local sport/recreation shops for additional information, weekly group trail rides and your biking and hiking needs. Shops are located downtown on 2<sup>nd</sup> Avenue: **The Guide’s Hut, Gearhub, Straightline, Ski Base, Edge of the World, Commit, Boardstiff, and Elevation.**

| TRAIL AREA & INFO LINKS   | 2019 Trail Updates:  |
|---|--|
| RIDGEMONT – 14 Trails<br><a href="https://www.trailforks.com/region/ridgemont-fernie-ridge/">https://www.trailforks.com/region/ridgemont-fernie-ridge/</a><br><br>This is private land owned by Ridgemont Holdings        | CLOSED<br>Closed for summer 2019 due to logging by private land owner. Trailforks map shows this area in RED for closed status. Expectations are that some trails will be available this fall.   |
| FERNIE RIDGE – 8 Trails<br><a href="https://www.trailforks.com/region/ridgemont-fernie-ridge/">https://www.trailforks.com/region/ridgemont-fernie-ridge/</a><br><br>This is private land owned by Canwel                  | PARTIALLY OPEN<br>Advanced trails for mountain biking<br>Adjacent to Ridgemont Trails and outside of the main effected area, many of these trails are or will be open once spring maintenance is completed. Such as Contra, FloWrkr, Big Money. Note there may be new access routes to these trails. |
| MONTANE – 6 Trails<br><a href="https://www.trailforks.com/region/fernie/">https://www.trailforks.com/region/fernie/</a><br><br>This is private land owned by Parastone Development. This specific trail area, and Montane | OPEN<br>Beginner and intermediate trails for hiking, biking and walking. Includes a wide, gravel ‘Inclusive Trail’ to Montane Hut with a maximum grade of 5%   |

|   |   |
|---|---|
| <p>Hut, are managed and maintained by the <a href="#">Ferne Trails &amp; Ski Touring Club</a></p>   |   |
| <p>CASTLE MOUNTAIN – 11 Trails<br/> <a href="https://www.trailforks.com/region/castle-mountain/">https://www.trailforks.com/region/castle-mountain/</a></p> <p>This is private land owned by Canwel</p>   | <p>OPEN</p> <p>Intermediate to advanced biking and hiking trails such as Hyper Ventilation, Hyper Extension, Castle Rocks and the popular new trail Today’s Special.</p>  |
| <p>MORRISSEY RIDGE – 6 Trails<br/> <a href="https://www.trailforks.com/region/fernie/">https://www.trailforks.com/region/fernie/</a></p> <p>This is private land owned by Canwel</p>  | <p>OPEN</p> <p>Advanced mountain biking trails such as Dirt Diggler, primarily shuttle downhill trails. All trails are or will be open once snow all gone and any spring maintenance is completed. Check Trailforks for updates.</p>  |
| <p>MT PROCTOR – 7 Trails<br/> <a href="https://www.trailforks.com/region/fernie/">https://www.trailforks.com/region/fernie/</a></p> <p>Area around Swine Flu, Far Side are cattle grazing areas with special restrictions such as no dogs allowed</p>   | <p>OPEN</p> <p>Beginner to advanced mountain biking and hiking trails such as Fairy Creek Falls and Swine Flu. Watch for new Swine Flu climb in near future.</p> <p>Full Mt Proctor backcountry hiking trail is accessible June to September.</p>   |
| <p>MT FERNIE – 20 Trails<br/> <a href="https://www.trailforks.com/region/mount-fernie-provincial-park/">https://www.trailforks.com/region/mount-fernie-provincial-park/</a></p> <p>Primarily public/crown land or provincial park lands.</p>  | <p>OPEN</p> <p>Beginner to advanced hiking and mountain biking trails including Sherwoody, Stove and Slunt Trails.</p> <p>Note during spring and fall season Mt Fernie Provincial Park Campground is undergoing road improvements and campsite expansions, please use caution during these times. Parking areas and some trailheads may be affected and rerouted during these times.</p> <p>Mt Fernie trails are easily accessible by bike from town.</p> <p>The middle section of Burma Road will be closed due to construction until end of June, no thru access. Phat Bastard trail access will still be available from the south end of Burma Road.</p> |
| <p>FERNIE ALPINE RESORT – 36 Trails<br/> <a href="https://skifernie.com/discover-fernie/summer-resort-map/">https://skifernie.com/discover-fernie/summer-resort-map/</a><br/> <a href="https://www.trailforks.com/region/fernie-alpine-resort/">https://www.trailforks.com/region/fernie-alpine-resort/</a></p> <p>Use of area only during open season. Visit Resort Guest Services for details</p> | <p>OPEN June 22 – September 2</p> <p>Beginner to advanced trails for mountain biking and hiking. Guided hiking and bike clinics available for all ages.</p> <p>Elk Chair – OPEN for lift access mountain biking, hiking and sightseeing</p> <p>Timber Chair – <u>CLOSED</u> for summer 2019 for major lift maintenance work. The 4 trails off this chair will be closed this season. Trails such as lower BC Cup and lower Bin Logdin will be partially accessible via Elk Chair.</p>   |

|   |   |
|---|---|
| <p>ISLAND LAKE LODGE – 15 Hiking Trails, 1 MTB Trail</p> <p><a href="https://www.islandlakelodge.com/summer">https://www.islandlakelodge.com/summer</a></p> <p><a href="https://www.trailforks.com/region/island-lake-24560/">https://www.trailforks.com/region/island-lake-24560/</a></p> <p>This is private land owned by Island Lake Resorts Group, with day-use public access during open season in summer.</p>   | <p>OPEN June 7 – October 7</p> <p>When mountain biking Lazy Lizard Trail please bike to the trailhead when possible due to limited parking at the Lodge.</p> <p>Lazy Lizard is a two-way trail, beware of uphill and downhill riders.</p>   |
| <p>TOWN AND VALLEY TRAILS</p> <p><a href="https://www.trailforks.com/region/fernie/">https://www.trailforks.com/region/fernie/</a></p> <p>Mix of City owned and maintained, private land and public/crown land.</p>   | <p>OPEN with some interruptions:</p> <p>Parts of Coal Discovery Trail/Town Loop just below Ridgemont are not accessible until further notice due to the logging access to Ridgemont area.</p> <p>The Community Dyke Trail/Town Loop by and around Maiden Lake will be closed from mid-July till end of October for flood mitigation work by the City of Fernie to extend and raise the dyke. This will also mean access to Maiden Lake will be closed. <a href="#">More Details</a></p> |
| <p>HEIKO'S TRAIL &amp; THREE SISTERS TRAIL (Hiking only)</p> <p><a href="https://tourismfernie.com/activities/hiking-trails/Heikos-trail-mnt-lake-trail">https://tourismfernie.com/activities/hiking-trails/Heikos-trail-mnt-lake-trail</a></p> <p><a href="https://www.trailforks.com/trails/mountain-lakes-trail-hiking-only-59253/">https://www.trailforks.com/trails/mountain-lakes-trail-hiking-only-59253/</a></p> <p>Primarily on public/crown land with portion of Heiko's Trail on Island Lake Lodge property.</p> | <p>OPEN ~ late June to mid-September (due to snow and poor weather, spring and fall travel on this trail is not recommended)</p> <p>Island Lake Lodge offers professional guiding on Heiko's Trail - <a href="https://www.islandlakelodge.com/summer">https://www.islandlakelodge.com/summer</a></p>  |

**For further details and updates contact locally:**

1. Fernie Trails Alliance (FTA) – [manager@fernietrailsalliance.com](mailto:manager@fernietrailsalliance.com)
  - a. FTA FB Page: <https://www.facebook.com/Fernie-Trails-Alliance-136085899841404/>
  - b. Trail Conditions & Ride Group Page: <https://www.facebook.com/groups/1591680514481230/>
2. Fernie Mountain Bike Club (FMBC) – [www.bikefernie.ca](http://www.bikefernie.ca)
3. City of Fernie – [cityhall@fernie.ca](mailto:cityhall@fernie.ca) or call 250-423-2245
4. Fernie Trails & Ski Touring Club - [fernietrails@fernie.com](mailto:fernietrails@fernie.com)
5. Fernie Alpine Resort – [guestservices@skifernie.com](mailto:guestservices@skifernie.com) or call 250-423-4655
6. Island Lake Lodge – [info@islandlakeresorts.com](mailto:info@islandlakeresorts.com) or call 250-423-3700
7. Mt Fernie Provincial Park – [info@ekparks.com](mailto:info@ekparks.com)
8. Fernie Visitor Centre – [vic@tourismfernie.com](mailto:vic@tourismfernie.com) or call 778-519-0748

**SUPPORT LOCAL TRAILS – DONATE OR JOIN**

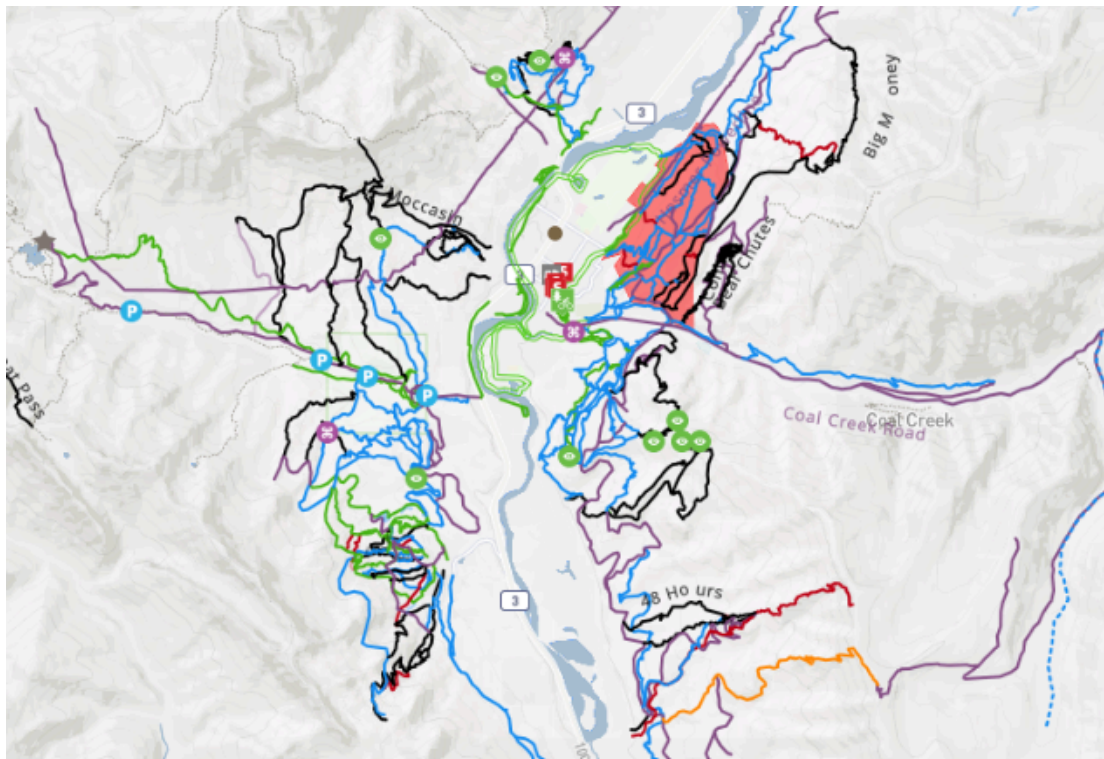
**BIKEFERNIE.CA**

**FERNIETRAILSALLIANCE.COM**

**FERNIETRAILS.COM**

## Fernie Map from [TrailForks](#)

Faded pink area shows the Ridgmont Trail area closure. Tons of trails still accessible in Fernie!



### Suggested Mountain Biking Routes

Easy / Very Beginner (all gravel or dirt trails/paths):

- Inclusive Trail in Montane – a wide gravel gentle path up to Montane Hut and back, easiest access is from the back of the Montane Residential Subdivision (end of Montane Parkway)
- Community Town Trails along the river – access from various locations include Annex Park, James White Park, behind Bridge Bistro Restaurant and Dogwood Boat Launch

Novice/Green:

- Coal Creek Heritage Trail - access from Fernie Aquatic Centre, trail continues parallel to Coal Creek Road.
- Lazy Lizard Trail – access from Island Lake Lodge's lower parking lot

Intermediate:

- Montane Blue – Lower Uprooted – For Evyr (then 2 options):
  - Down to Montane Hut – Montane Blue back to Coal Creek Road Parking area by Red Barn, or
  - Old Roots – Uprooted – Lower Uprooted back to Coal Creek Road Parking area by Red Barn
- Mt Fernie: Gorby – Old Goat – Happy Gilmar – Ben Emmet – Sherwoody

Advanced XC:

- [Trail to Ale Challenge](#): Project 9, Swine Flu and Hyper Vent/Ext in 24 hours – or just do one on its own
- Mt Fernie: Phat Bastard – Mushroom Head – Lactic Ridge – Stupid Traverse – S-Bomb/Slunt/Brokeback

Downhill MTB:

- Morrissey Ridge: Three Kings or 48 Hours
- Fernie Alpine Resort Bike Park (open June 22<sup>nd</sup>)